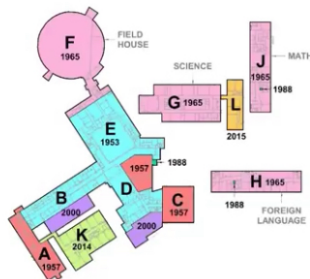


Designer Update

Existing Conditions Investigations

- Wetlands Flagging – field work completed 12/15
- Traffic Observations – performed on site 12/14 & 12/15
- Geotechnical Borings – field work completed 12/21 & 12/22
- Geothermal test boring well – will be completed during PSR phase, around 6/1
- Environmental acoustics baseline measurements – scheduled to be performed around 4/1
- Land survey – field work is nearing completion, CAD/office work currently underway, estimated first draft on 2/14
- Existing Building Architecture, Structure and Systems Review – SMMA team spent two days on site on 12/19 & 12/20, currently working on existing conditions report, first draft expected on 1/26



Thumbnails

20240122 SBC Presentation no. 7 CD RR

20240122 LHS Milestones

LHS Monthly Report - December CD2

Existing Conditions Investigations



Curriculum and Schedule Analysis



Precedents



Visioning

Focus Groups

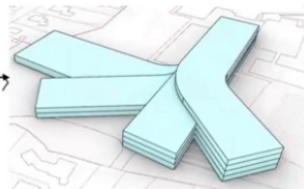
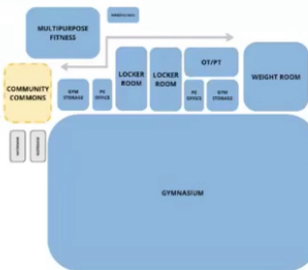


Educational Programming Meetings



THE EDUCATIONAL PLAN FOR LEXINGTON HIGH SCHOOL

SPACE SUMMARY		MSBA Guidelines (refer to MSBA Educational Programs & Space Standard Guidelines)			
ROOM TYPE	ROOM NO.	SQ FT BBS	Area Index	Comments	
LEARNING SPACES					
SMA classrooms of different sizes (separate)					
Classroom - General	250				250 sq ft min. - 350 sq ft max.
Teacher Planning	150				
Small Group Seminar (20-30 seats)	100				
Science Classroom - Lab	1,400				1,000 sq ft min. - 1,600 sq ft max.
Project Room	200				
Creative Classroom (Storage Box)	200				
SPECIAL EDUCATION					
SMA classrooms of different sizes (separate)					
Self-Contained SPED	400				250 sq ft min. - 400 sq ft max.
Self-Contained SPED Toilet	40				
Resource Room	100				100 sq ft min. - 150 sq ft max.
Small Group Room	100				100 sq ft min. - 150 sq ft max.



9

Scale Not Set

10

Scale Not Set

11

Scale Not Set

12

Scale Not Set

13

Scale Not Set

14

Scale Not Set

DESIGNER UPDATE

Focus Groups – Educational Planning & Equity

Meeting Dates

- Meeting #1 - January 25th , 1-3PM
- Meeting #2 - February 5th , 1-3 PM
- Meeting #3 - February 29th , 1-3 PM

Meeting Objectives

- Meeting #1 - Listen
- Meeting #2 - Respond
- Meeting #3 - Recommend

Meeting Focus

Review overall goals from educational planning perspectives, educational programming meetings and visioning sessions. As the design progresses, this group will also be involved with review of the following:

- Plan Preview – follow up w/ refined layout
- Furniture coordination (inc. budget)
- Equipment coordination (inc. budget)
- Technology coordination (inc. budget)

Name	Town or District Role
Cynthia Arens	Sustainable Lexington Committee – Chair
Barbara Adolf	ESL Teacher
Ariana Akram	METCO Social Worker
Andrew Baker	High School Principal
Tom Buckley	Special Ed Teacher
Julie Hackett	Superintendent of Schools
John Himmel	PBC Chair
Mike Horesh	Science Teacher
Nidhi Inamdar	Student
Suzanne Lau	
Kathleen Lenihan	SBC Chair
Deepika Sawhney	School Committee - Vice Chair
Sanjana Thesayi	LHS Student
Malakai St. Fleur	METCO Student
Mike Cronin	Lexington
Mark Barrett	Lexington

Name

Town or District Role

Cynthia Arens

Sustainable Lexington Committee – Chair

DORE + WHITTIER

MSBA Policies

The Following Spaces shall be categorically ineligible for Authority funding

- **Swimming Pools** – MSBA will only allow if separate project, separate funding, and ballot vote
- Skating Rinks
- **Field Houses** (Field houses have a track vs Gymnasium)
- **District Administrative Office Space** – MSBA may allow but will not participate
- Indoor Tennis Courts
- Other spaces as determined ineligible by MSBA



The Following Spaces are subject to size limits

- **Auditorium** shall be no more than **13,300 nsf** (based upon upper limit of **1,000 seats**)
- **Gymnasiums** – The district may choose to build a gymnasium and associated spaces, but in no event shall the gymnasium exceed **18,000 nsf**. The MSBA will participate in a gymnasium of up to **12,000 nsf** unless adjusted by the MSBA to increase teaching stations for enrollment and/or the educational plan.
- Areas in excess of the MSBA guidelines will be at the sole expense of the district;
- Community support must be demonstrated prior to MSBA approval of a district's proposed project scope and budget
- The MSBA will exclude from its grant the cost of the total gross square foot ("gsf") above guidelines for these areas. Total NSF over MSBA limits x 1.5* grossing factor. This amount will not change over the term of the grant even if the bids come in at a lower amount.

*Net square foot (NSF)

* Grossing factor to be determined at end of schematic design

DORE + WHITTIER

SBC Meeting Agenda – January 22, 2024, 12:00PM

Categories:

- Diversity, Equity and Inclusion
- Cost and Schedule
- Educational
- Building
- Site
- Sustainability
- Construction Impacts / Cost
- Operational Cost
- Community